



Winter Chiller

MARCH 27-28, 2021

CHJA Approved
At

Hobby Horse Farms



www.HobbyHorseFarmco.com

5220 Bella Rosa Parkway
Firestone, Co 80504

**PreEntry DEADLINE:
Thursday March 25,
2021 at 2PM**

Information: Kaite- 720-298-0908

Winter Chiller- March 27&28, 2021

Judge: Dan Schiefen

USEF Show Steward: Celia Thomas

Show Manager: Kaite Lorentz
720-298-0908

Course Designer: TBD

Show Secretary: Annette Cyboron
720-341-5811

Announcer: TBD

Paddock: TBD

Stabling: TBD

Veterinarian: Elite Equine Sports Medicine
Dr. Nancy Carr
303-435-0333

Farrier: TBD

EMT: Mark Huff
720-480-3429

Concession: What The Fork- Available 9am-5pm

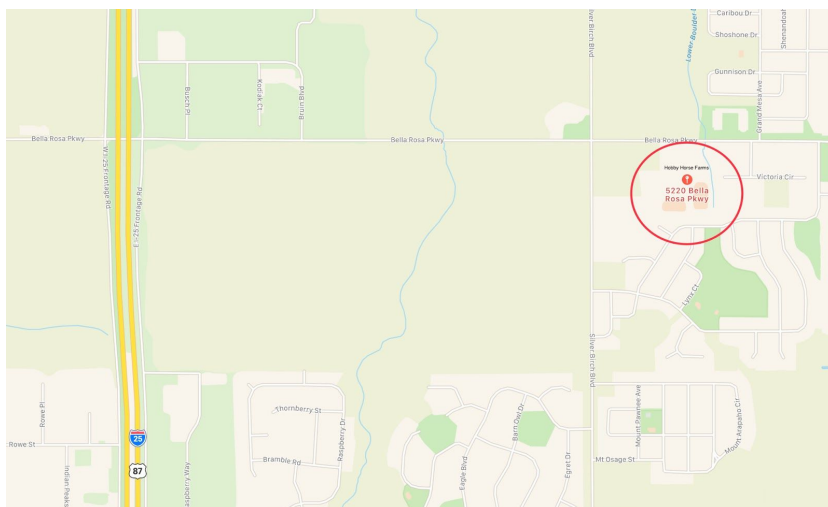
Crew: Hobby Horse Staff



Location and Directions

Hobby Horse Farms

5220 Bella Rosa Parkway
Firestone Colorado
80504



Denver- North on I-25, take Highway 52 exit east (right) to Silver Birch. Take Silver Birch north (left) to Bella Rosa Parkway (3rd stop sign). Take Bella Rosa Parkway east (right) to the first driveway on the right (Hobby Horse Farms).

Boulder- Highway 52 east to Silver Birch (1 mile east of I-25) and proceed as above.

Ft. Collins- South on I-25, take the Highway 119 exit and go 1 mile east (left) to Silver Birch. Take Silver Birch south (right) to Bella Rosa Parkway. Turn east (left) on Bella Rosa and turn right into the first driveway at Hobby Horse Farms.

Longmont- take Highway 119 east to Silver Birch and proceed as above from Ft. Collins

WARNINGS

WARNING: Under Colorado Law, an equine professional is not liable for any injury to or the death of a participant in equine activities resulting from inherent risks of equine activities, pursuant to **Section 13-21-119**, Colorado Revised Statutes.

Hobby Horse Farms, and Winter Chiller Show, will in no way be responsible for any loss or accident which may occur by fire or otherwise and it shall be a condition of entry that each exhibitor hold Hobby Horse Farms and Winter Chiller Show, harmless for any damage or loss that may occur to any animals, vehicles, or persons.



Class Specifications

All classes will be conducted in accordance with the current CHJA Rules & Specifications. USEF rules will govern in all instances except where CHJA specifications adjust for local situations.

-For complete CHJA class descriptions please refer to the 2020 CHJA Rule Book. For membership and horse recording forms. Please visit : www.CHJA.org

Show Rules

1. Regulated schooling will start at 6:30 am and will continue until 7:45am and will be permitted in designated areas ONLY. Management will supervise. Hard hats, and shoes or boots with distinctive heel, must be worn at all times by all exhibitors or riders while on horseback anywhere on the show grounds. Juniors must wear headgear which meets the USEF standards with harnesses secured. Courses will be posted and available one hour before the start of classes. One-minute gate and dotted line may be enforced.
2. No refunds will be given unless accompanied by a veterinarian's certificate. Non-showing horse policy: Only an EMT Fee and Office Fee will be charged if the horse schools and does not show.
3. All dogs must be leashed.
4. EMT will be present for schooling and the duration of the horse show.

5. Each class will award a first place prize and ribbons through 6 place. Champion and Reserve Champion will be offered in all divisions.

6. Show management reserves the right to cancel, combine or divide any class or classes.

Stabling

A limited number of stalls are available.

Arrangements can be made with Kaite at 720-298-0908

Biosecurity and health requirements

It is Hobby Horse Farms policy to require a current health certificate and current coggins (within the last calendar year) for all horses trailering onto the property. A current health certificate is considered to be within 90 days of the competition. If there is an outbreak of an infectious disease, however, these policies will change depending on the disease's incubation period. Please stay updated via our website www.HobbyHorseFarmCO.com , CHJA.org, and/or our Facebook page.



COVID-19 Guidelines

1. Self-Monitor, take your temperature each morning. If you have a temp over 99.5 degrees or any COVID-19 symptoms, please stay home.
2. Staff will have temperatures taken each morning.
3. Face masks will be required by all those un-mounted
4. Riders will not be penalized for riding in face masks
5. Sanitizing stations will be available and frequent sanitisation of common grounds will be practiced.
6. Do your best to spread out, remember 6' guideline.
7. Limit your personal spectators.
8. Practice good hygiene, use hand sanitizer, wash your hands etc.

-Abiding by these guidelines will ensure the ability for the equestrian community to continue offering events. We Thank-You all for your patience, understanding and cooperation.

Fees

Checks payable to: **Hobby Horse Farms.**

Classes	\$20
Medal Classes	\$25
EMT Fee per rider	\$15
Office Fee per entry	\$25
Stalls per day	\$35
Grounds Fee (Charged to horses without a stall)	\$15
Late Fee applied 2pm Thurs March 25, 2021	\$25

- Grounds fee waived for horses stabled at Hobby Horse Farms
- Late fees are nonrefundable, but as classes are cancelled or asked to be filled, the charge for entered classes may be dismissed.
- Show scratches are not refunded the stall fee if they were present at the show and stalled there.
- Any returned checks must be paid in cash or certified funds within 10 days



Horse Show Information

Entries – one horse per entry blank.

Any returned checks must be paid in cash or certified funds within 10 days

Please note: Entries must be received by Thursday, March 25, 2021, 2:00 PM to avoid the late fee.

Mail entries to:

Hobby Horse Farms

5220 Bella Rosa Parkway Firestone, CO 80504

Or email entries to:

Events@HobbyHorseFarmCO.com

Class List

Saturday March 27 – 8:00 A.M.

1. Red and Blue Warm Up
2. CHJA 2'3"-2'6" Hunter
3. CHJA 2'3"-2'6" Hunter
4. CHJA 2'3"-2'6" Hunter U/S
5. CHJA 2'6"-2'9" Hunters
6. CHJA 2'6"-2'9" Hunters
7. CHJA 2'6"-2'9" Hunter U/S

***** Will not start before 9:30 AM *****

8. CHJA Low Adult Hunter

9. CHJA Low Adult Hunter
10. CHJA Low Adult Equitation, O/F
11. CHJA Low Adult Equitation, O/F
12. CHJA Low Adult Equitation, Flat
13. CHJA Low Adult Hunter, U/S
14. Columbine Adult Medal

Schooling break

15. CHJA Low Children's Hunter
16. CHJA Low Children's Hunter
17. CHJA Low Children's Equitation, O/F
18. CHJA Low Children's Equitation, O/F
19. CHJA Low Children's Equitation, Flat
20. CHJA Low Children's Hunter, U/S
21. Columbine Junior Medal

Schooling break

22. CHJA Long Stirrup Hunter
23. CHJA Long Stirrup Hunter
24. CHJA Long Stirrup Equitation, O/F
25. CHJA Long Stirrup Equitation, O/F
26. CHJA Long Stirrup Equitation, flat
27. CHJA Long Stirrup Hunter, U/S
28. CHJA Long Stirrup Medal
29. CHJA Short Stirrup Hunter
30. CHJA Short Stirrup Hunter
31. CHJA Short Stirrup Equitation, O/F
32. CHJA Short Stirrup Equitation, O/F
33. CHJA Short Stirrup Equitation, flat
34. CHJA Short Stirrup Hunter, U/S
35. CHJA Short Stirrup Medal
36. CHJA Medium Stirrup Hunter
37. CHJA Medium Stirrup Hunter



38. CHJA Medium Stirrup Equitation, O/F
39. CHJA Medium Stirrup Equitation, O/F
40. CHJA Medium Stirrup Equitation, flat
41. CHJA Medium Stirrup Hunter, U/S
42. CHJA Medium Stirrup Medal
43. Red and Blue Warm Up—3'–3'5"
44. CHJA Adult Hunter
45. CHJA Adult Hunter
46. CHJA Adult Equitation, O/F
47. CHJA Adult Equitation, O/F
48. CHJA Children's Hunter
49. CHJA Children's Hunter
50. CHJA Children's Equitation, O/F
51. CHJA Children's Equitation, O/F
52. CHJA Adult Equitation, flat
53. CHJA Children's Equitation, Flat
54. CHJA Adult Hunter, U/S
55. CHJA Children's Hunter, U/S
56. Ruth Ayers Medal
57. Colonel Robertson Medal
58. Dorothy Roberts Memorial Medal
59. CHJA Adult Medal
60. CHJA Children's Medal

Sunday March 28- 8 A.M.

61. CHJA 0.75 M Jumper
62. CHJA 0.75 M Jumper
63. CHJA 0.75 M Jumper
64. CHJA 0.85 M Jumper
65. CHJA 0.85 M Jumper
66. CHJA 0.85 M Jumper
67. CHJA 0.90 M Jumper

68. CHJA 0.90 M Jumper
69. CHJA 0.90 M Jumper
70. CHJA 1.00 M Jumper
71. CHJA 1.00 M Jumper
72. CHJA 1.00 M Jumper
73. CHJA 1.10 M Jumper
74. CHJA 1.10 M Jumper
75. CHJA 1.10 M Jumper
76. CHJA 1.15 M Jumper
77. CHJA 1.15 Jumper